

Tablets & Capsules

| Sr.No. | Name of Products | Packing | Page |
|--------|--|---------|------|
| | COLATE | | |
| 01 | Phenylephrine Hcl I.P. 5 mg. Chlorpheniramine + Maleate I.P. 2 mg. + Paracetamol I.P. 500 mg. | 30 X 10 | 005 |
| | LEMOWEL | | |
| 02 | Cetirizine Hydrochloride I.P. 5 mg + Paracetamol I.P. 500 mg. + Phenylephrine Hydrochloride I.P. 5 mg. | 30 X 10 | 006 |
| | CETWEL | | |
| 03 | Cetirizine Dihydrochloride I.P. 10 mg. | 35 X 30 | 007 |
| | CETWEL-L | | |
| 04 | Cetirizine Dihydrochloride I.P. 5 mg. | 50 X 10 | 008 |
| | CETWEL-LM | | |
| 05 | Levocetirizine Dihydrochloride I.P. 5 mg + Monelukast Sodium I.P. 10 mg. | 20 X 10 | 009 |
| | NEW SUPER 600 | | |
| 06 | Paracetamol 500 mg. + Phenylephrine Hcl I.P. 5 mg. + Chlorpheniramine Maleate I.P. 2 mg. | 25 X 8 | 010 |
| | COUGHWEL | | |
| 07 | Terbutaline Sulphate I.P. 2.5 mg. + Bromhexine Hydrochloride I.P. 8 mg + Guaiphenesin I.P. 100 mg. | 30 X 10 | 011 |
| | COUGHWEL-DX | | |
| 08 | Dextromethorphan Hydrobromide I.P. 10 mg + Phenylephrine Hydrochloride I.P. 5 mg + Chlorpheniramine Maleate I.P. 2 mg. | 50 X 10 | 012 |
| | AMBROWEL | | |
| 09 | Levocetirizine Hydrochloride I.P. 5 mg. + Ambroxol Hydrochloride I.P. 60 mg. | 30 X 10 | 013 |
| | WELPOL | | |
| 10 | Paracetamol I.P. 500 mg. | 30 X 10 | 014 |
| | WELPOL-650 | | |
| 11 | Paracetamol I.P. 650 mg. | 20 X 15 | 015 |
| | WELACH | | |
| 12 | Paracetamol I.P. 250 mg. + Salicylamide U.S.P. 150 mg. + Caffeine Anhydrous I.P. 30 mg. | 40 X 10 | 016 |
| | WELNAC-P | | |
| 13 | Diclofenac Sodium I.P. 50 mg. + Paracetamol I.P. 325 mg. | 50 X 10 | 017 |
| | DICLOWEL-P | | |
| 14 | Diclofenac Sodium I.P. 50 mg + Paracetamol I.P. 325 mg. | 30 X 10 | 018 |
| | D.P.WEL | | |
| 15 | Diclofenac Sodium I.P. 50 mg + Paracetamol I.P. 325 mg. | 50 X 10 | 019 |

| Sr.No. | Name of Products | Packing | Page |
|--------|---|---------|------|
| | DICLOWEL-MR | | |
| 16 | Diclofenac Potassium B.P. 50 mg. + Paracetamol I.P. 325 mg. + Chlorzoxazone U.S.P. 250 mg. | 30 X 10 | 020 |
| | WELFLAM | | |
| 17 | Ibuprofen I.P. 400 mg. + Paracetamol I.P. 325 mg. | 30 X 10 | 021 |
| | WELPROFEN | | |
| 18 | Paracetamol 500 mg. + Phenylephrine Hcl I.P. 5 mg. + Chlorpheniramine Maleate I.P. 2 mg. | 30 X 10 | 022 |
| | NIMOWEL | | |
| 19 | Paracetamol I.P. 333 mg. + Ibuprofen I.P. 400 mg. | 20 X 10 | 023 |
| | NIMOWEL-P | | |
| 20 | Nimesulide B.P. 100 mg. + Paracetamol I.P. 325 mg. | 30 X 10 | 024 |
| | PARACE | | |
| 21 | Aceclofenac I.P. 100 mg. + Paracetamol I.P. 325 mg. | 50 X 10 | 025 |
| | PARACE-SP | | |
| 22 | Aceclofenac I.P. 100 mg. + Paracetamol I.P. 325 mg. + Serratiopeptidase I.P. 10 mg. | 20 X 10 | 026 |
| | WELSPAS | | |
| 23 | Dicyclomine Hcl I.P. 20 mg. + Paracetamol I.P. 500 mg. | 30 X 10 | 027 |
| | SPASMEF | | |
| 24 | Mefenamic Acid I.P. 250 mg. + Dicyclomine Hydrochloride I.P. 10 mg. | 30 X 10 | 028 |
| | ULCIPAN | | |
| 25 | Pantoprazole Sodium Sesquihydrate I.P. Eq. to Pantoprazole 40 mg. | 20 X 10 | 029 |
| | OME-P | | |
| 26 | Omeprazole I.P. 20 mg. (as enteric coated granules) | 20 X 15 | 030 |
| | OMEWEL-D | | |
| 27 | Omeprazole I.P. 20 mg. (As enteric coated granules) + Domperidone I.P. 10 mg. | 20 X 15 | 031 |
| | RABEWEL-DSR | | |
| 28 | Rebeprazole Sodium I.P. 20 mg. (As enteric coated pellets) + Domperidone I.P. 30 mg. (As sustained release pellets) | 10 X 10 | 032 |
| | RANIWEL-150 | | |
| 29 | Ranitidine Hydrochloride I.P. Equivalent to Ranitidine 150 mg. | 30 X 10 | 033 |
| | RANIWEL-300 | | |
| 30 | Ranitidine Hydrochloride I.P. 336 mg. + equivalent to Ranitidine 300 mg. | 30 X 10 | 034 |

Tablets & Capsules

Cough drops & Syrups

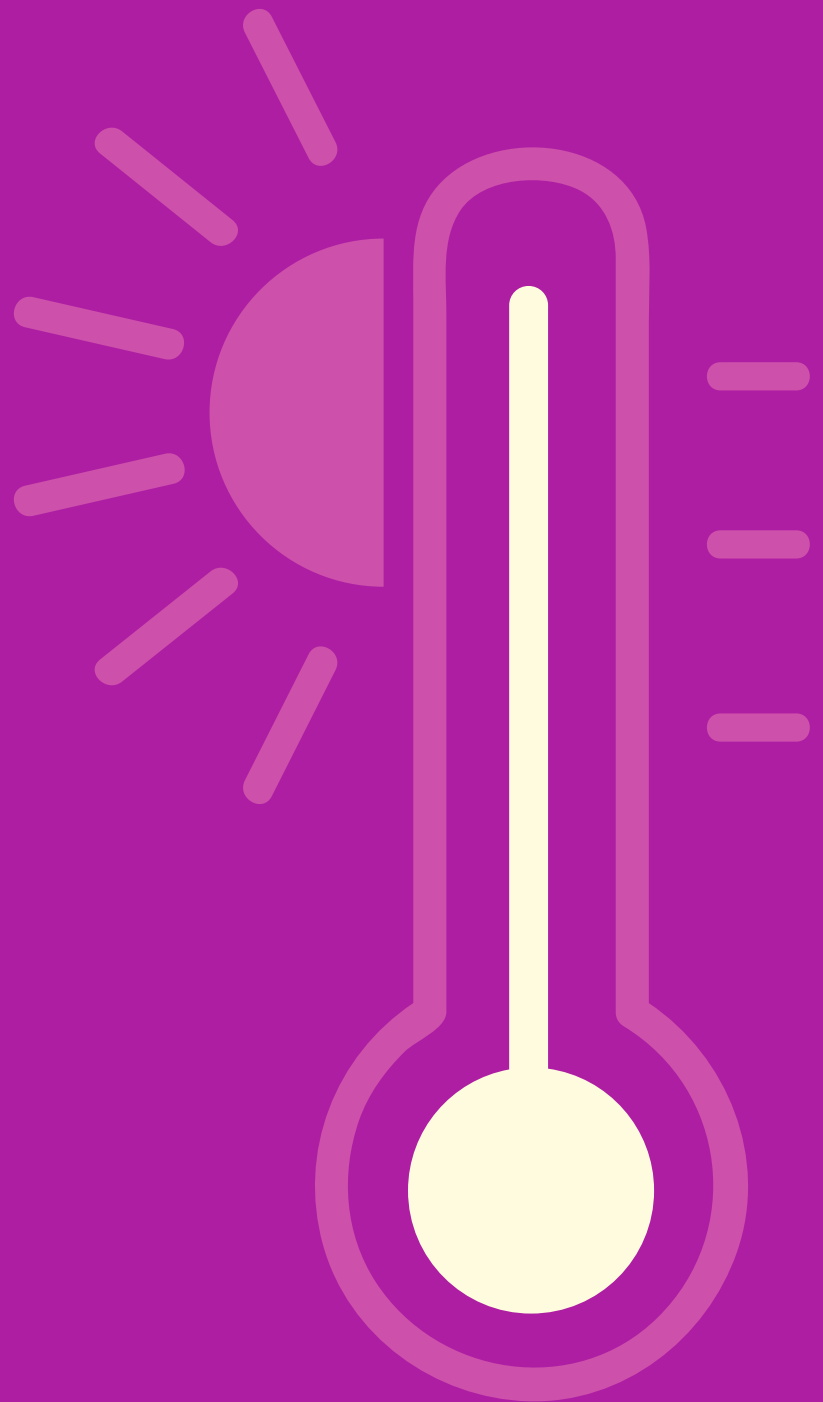
| Sr.No. | Name of Products | Packing | Page |
|-----------|---|---------|------|
| 31 | RANIWEL-D Ranitidine Hydrochloride I.P. equivalent to Ranitidine 150 mg. + Domperidone I.P. 10 mg. | 30 X 10 | 035 |
| 32 | FLUZOLE Fluconazole I.P. 150 mg. | 1 X 1 | 036 |
| 33 | ITRAWEL-100 Itraconazole Pellets eq. to Itraconazole B.P. 100 mg. | 10 X 10 | 037 |
| 34 | SALBUWEL FORT Salbutamol Sulphate I.P. Equivalent to Salbutamol 4 mg. + Theophylline Anhydrous I.P. 200 mg. | 30 X 10 | 038 |
| 35 | WELMOX CV 625 Amoxicilline Trihydrate I.P. eq. to Amoxicilline 500 mg. + Potassiumm Clavulanate 125 mg. | 10 X 6 | 039 |
| 36 | WELMOX-D Amoxicilline Trihydrate I.P. eq. to Amoxicilline 250 mg. + Cloxacillin Sodium I.P. 250 mg. | 20 X 10 | 040 |
| 37 | WEL-CEF-200 Cefixime I.P. eq. to Cefixime Anhydrous 200 mg. | 10 X 10 | 041 |
| 38 | WELCIPRO-500 Ciprofloxacin 500 mg. (As Ciprofloxacin Hydrochloride I.P.) | 30 X 10 | 042 |
| 39 | WELFLOX-200 Ofloxacin U.S.P. 200 mg. | 20 X 10 | 043 |
| 40 | WELFLOX-OZ Ofloxacin I.P. 200 mg. + Ornidazole I.P. 500 mg. | 30 X 10 | 044 |
| 41 | NORWEL-TZ Norfloxacin I.P. 400 mg. + Tinidazole I.P. 600 mg. Lactic Acid + Bacillus 120 x 10 ⁶ Spores (Appropriate Overages added) | 30 X 10 | 045 |
| 42 | LIVO-L Levofloxacin Hemihydrate I.P. eq. to Levofloxacin 500 mg. | 20 X 10 | 046 |
| 43 | ZTHRO-250 Azithromycin Dihydrate I.P. Eq. to Azithromycin Anhydrous 250 mg. | 20 X 10 | 047 |
| 44 | ZTHRO-500 Azithromycin Dihydrate I.P. 500 mg. Eq. to Azithromycin | 20 X 3 | 048 |
| 45 | COLATE LICTUS Paracetamol I.P. 125 mg. + Phenylephrine Hcl I.P. 2.5 mg. + Chlorpheniramine Maleate I.P. 1.25 mg. + Bromhexine Hydrochloride I.P. 4 mg. + Menthol I.P. 1 mg. | 60 ML. | 050 |

| Sr.No. | Name of Products | Packing | Page |
|-----------|---|-------------------|------|
| 46 | COLATE PLUS SUSP Paracetamol I.P. 250 mg. + Phenylephrine Hcl I.P. 5 mg. + Cetrizine 2.5 mg. + Dihydro Chloride I.P. | 60 ML. | 051 |
| 47 | COLATE DROP Paracetamol I.P. 125 mg. + Phenylephrine Hydrochloride I.P. 2.5 mg. + Chlorpheniramine Maleate I.P. 1 mg. | 15 ML. | 052 |
| 48 | WELNEX DX EXP. Dextromethorphan Hydrobromide I.P. 10 mg. + Phenylephrine Hydrochloride I.P. 5 mg. + Chlorpheniramine Maleate I.P. 2 mg. | 100 ML. 60 ML. | 053 |
| 49 | WELDRYL COUGH SYP. Diphenhydramine Hydrochloride I.P. 14.08 mg. + Ammonium Chloride I.P. 138 + Sodium Citrate I.P. 57.03 mg. + Menthol I.P. 3 mg. | 100 ML. 60 ML. | 054 |
| 50 | AMBROWEL COUGH SYP. Ambroxol Hydrochloride I.P. 30 mg. + Cetrizine Hydrochloride I.P. 2.5 mg. | 100 ML. 60 ML. | 055 |
| 51 | AMBROWEL-LS SYP. Levosulbutamol Sulphate I.P. Eq. to Levosulbutamol 1 mg. + Guaiphenesin I.P. 50 mg. + Ambroxol Hydrochloride I.P. 30 mg. | 100 ML. | 056 |
| 52 | COUGHWEL COUGH SYP. Terbutaline Sulphate I.P. 1.25 mg. + Bromhexine HCL I.P. 2 mg. + Guaiphenesin I.P. 50 mg. + Menthol I.P. 0.5 mg. | 100 ML. 60 ML. | 057 |
| 53 | HISTOWEL EXP. Chlorpheniramine Maleate I.P. 4 mg. + Ammonium Chloride I.P. 120 mg. + Sodium Citrate I.P. 50 mg. + Balsam of Tolu I.P. 40 mg. + Menthol I.P. 1 mg. | 100 ML. | 058 |
| 54 | NIMOWEL-P SYP. Acelofenac I.P. 50 mg. + Paracetamol I.P. 125 mg. | 60 ML. | 059 |
| 55 | WELFLAM SYP. Paracetamol I.P. 162.5 mg. + Ibuprofen I.P. 100 mg. | 60 ML. | 060 |
| 56 | WELPOL PLUS SYP. Paracetamol I.P. 250 mg. | 60 ML. | 061 |
| 57 | WEL-CEF DRY SYP. Cefixime Anhydrous 50 mg. | 30 ML. | 062 |
| 58 | WELMOX CV DRY SYP. Amoxicilline Trihydrate I.P. 200 mg. (eq. to amoxicilline) + Potassium Clavulanate I.P. 28.5 mg. eq. to Clavulanic Acid | 30 ML. | 063 |
| 59 | H B WEL SYRUP Ferric Ammonium Citrate I.P. 110 m. + Folic Acid I.P. 1.5 mg. + Cyanocobalamin I.P. 15 mcg. + Sorbitol Solution (70%) I.P. 10% w/v (Noncrystallising) | 200 ML. | 064 |
| 60 | HEPTAWEL PLUS SYP. Cyproheptadine Hydrochloride I.P. 2 mg. + Tricholine Citrate (65%) 275 mg. + Sorbitol Solution (70%) I.P. Q.S. | 200 ML. | 065 |

| Sr.No. | Name of Products | Packing | Page |
|--------------------------|--|---------|------|
| ALKAWEL SYP. | | | |
| 61 | Di-Sodium Hydrogen Citrate B.P. 1.53 g. | 100 ML. | 066 |
| WELSPAS DROP | | | |
| 62 | Simethicone Emulsion USP equivalent to Simethicone I.P. 40 mg. + Dicyclomine Hydrochloride I.P. 10 mg. | 15 ML. | 067 |
| ORWEL SUS. | | | |
| 63 | Ondansetron Hydrochloride I.P. Eq. to Ondansetron 2 mg. | 30 ML. | 068 |
| WELCID GEL | | | |
| 64 | Magnesium Hydroxide I.P. 200 mg. + Dried Aluminium Hydroxide Gel I.P. 200 mg. + Simethicone I.P. 25 mg. | 170 ML. | 069 |
| WELCORT EAR DROP. | | | |
| 65 | Gentamicin Sulphate I.P. eq. to Gentamicin 0.3% w/v + Beclomethasone Dipropionate I.P. 0.025% w/v + Clotrimazole I.P. 1.0% w/v + Lignocaine Hcl I.P. 2.0% w/v | 5 ML. | 070 |
| WELNAC-P GEL | | | |
| 66 | Diclofenac Diethylamine B.P. 1.16% w/w + Eq. to Diclofenac Sodium 1.00% w/w + Linseed Oil B.P. 3.00% w/w + Methyl Salicylate I.P. 10.00% w/w + Methol 5.00% w/w + Capsaicin U.S.P. 0.025% w/w | 30 GM. | 072 |
| WENAC-P SPRAY | | | |
| 67 | Diclofenac Diethylamine I.P. 1.16% w/w + Linseed Oil B.P. 3.00% w/w + Methyl Salicylate I.P. 10.00% w/w + Menthol I.P. 5% w/w + Propellant Q.S. to 100% w/w | 55 GM. | 073 |
| DICLOWEL GEL | | | |
| 68 | Diclofenac Diethylamine B.P. 1.16% w/w + Eq. to Diclofenac Sodium 1.00% w/w + Linseed Oil B.P. 3.00% w/w + Methyl Salicylate I.P. 10.00% w/w + Menthol I.P. 5.00% w/w + Benzyl Alcohol I.P. 1.00% w/w (as reservative) | 30 G. | 074 |
| QUADRIWEL | | | |
| 69 | Clobetasol Propionate I.P. 0.05% w/w + Neomycin Sulphate I.P. Eq. to Neomycin 0.1% w/w + Tolnaftate I.P. 1.00% w/w + Iodochlorhydroxyquinoline I.P. 1.00% w/w + Ketoconazole I.P. 2.00% w/w | 15 G. | 075 |
| CLOBEN GM CREAM | | | |
| 70 | Clobetasol Propionate I.P. 0.05% w/w + Clotrimazole I.P. 1.00% w/w + Neomycin Sulphate I.P. Eq. to Neomycin Base 0.50% w/w + Chlorocresol I.P. 0.10% w/w (As Preservative) | 10 G. | 076 |
| WELFLOX-OZ CREAM | | | |
| 71 | Ofloxacin I.P. 0.75% w/w + Ornidazole I.P. 2.00% w/w + Terbinafine Hydrochloride I.P. Eq. to Terbinafine 1.00% w/w + Beclomethasone Dipropionate I.P. 0.025% w/w + Methyl Paraben (As Preservative) I.P. 0.20% w/w + Propyl Paraben (As Preservative) I.P. 0.02% w/w | 15 G. | 077 |
| PD WEL OINTMENT | | | |
| 72 | Povidone Iodine I.P. 10.00% w/w + Available Iodine 1.00% w/w | 15 G. | 078 |
| ULCIWEL GEL | | | |
| 73 | Choline Salicylate Solution B.P. eq. to Choline Salicylate 8.7% w/w + Lignocaine Hcl I.P. 2.0% w/w Benzalkonium Chloride Solution I.P. 0.01% w/w | 10 G. | 079 |
| SCABNIL LOTION | | | |
| 74 | Gamma Benzene Hexachloride I.P. 1% w/v + Cetrimide I.P. 0.1% w/v | 100 ML. | 080 |
| KETO SCAL SHAMPOO | | | |
| 75 | Ketoconazole I.P. 2.0% w/w | 100 ML. | 081 |

| Sr.No. | Name of Products | Packing | Page |
|--------------------------------------|---|---|------|
| SODA-G (Lemon-Regular) | | | |
| 76 | Svarjiksara (Shudh) 2.91 g. + Nimbukamlam (Shushkam) 2.04 mg. Svarjiksara (Shudh) 2.94 g. + Nimbukamlam (Shushkam) 2.06 mg. | 6 Sach. x 5 gm 72 Sach. x 5 gm | 083 |
| SODA-G (Jeera) | | | |
| 77 | Svarjiksara (Sudh) 48.1% w/w + Nimbukamlam (Shushkam) 32.8% w/w + Samudralavan 7% w/w + Jeera 3% w/w + Adrak 0.02% w/w + Kali mirch 0.6% w/w + Dhaniya 0.45% w/w + Saurvachal 8.0% w/w + Asafoetide 0.03% w/w | 6 Sach. x 7 gm | 084 |
| SODA-G (Container Pack) | | | |
| 78 | Svarjiksara (Shudh) 2.91 g. + Nimbukamlam (Shushkam) 2.04 mg. Svarjiksara (Shudh) 2.94 g. + Nimbukamlam (Shushkam) 2.06 mg. | 100 + 30 gm | 085 |
| SUPER-ONE (Advance) | | | |
| 79 | Paracetamol I.P. 500 mg. + Diphenhydramine Hcl I.P. 25 mg. + Phenylephrine Hcl I.P. 5 mg. + Caffeine Anhydrous I.P. 30 mg. | 30 x 10 | 086 |
| PAINSTOP | | | |
| 80 | Paracetamol 500 mg. + Phenylephrine Hcl I.P. 5 mg. + Chlorpheniramine Maleate I.P. 2 mg. | 40 x 10 35 x 10 | 087 |
| PAINSTOP (Ointment) | | | |
| 81 | Paracetamol I.P. 500 mg. + Caffeine Anhydrous I.P. 50 mg. | 25 gm | 088 |
| WELABLE BALM | | | |
| 82 | Mentha ssp-satva 12.5% w/w + Gaultheria fragrantissima oil 15% w/w + Tarpin Oil 3.0% w/w + Nilgiri Tel 2.0% w/w + Karpoor 3.0% w/w + Ajowan Ka phool 1.0% w/w | 10 ml. | 089 |
| WELABLE Cough Drops | | | |
| 83 | Kapoor 0.17 mg. + Pudinah Ke Phool 7.12 mg. + Nilgiri Tel 1.76 mg. + Ajowan Ke Phool 0.22 mg. | 3g x 270 Drops 3g x 190 Drops | 090 |
| WELABLE Roll on + Inhaler | | | |
| 84 | Phudina ka Phool 15.00% w/w + Karpoor 15.00% w/w + Gultheria Oil 29.5% w/w + Nilgiri Oil 4.50% w/w | 1x12 Blister 1 x 50 Cont. | 091 |
| WELABLE Inhaler | | | |
| 85 | Phudina ka Phool 42.00% w/w + Karpoor 41.00% w/w + Gultheria Oil 12.5% w/w + Nilgiri Oil 3.00% w/w + Jayphal Oil 1.00% w/w | 1 x 6 Blister 1 x 50 Cont. | 092 |
| CALCIWEL | | | |
| 86 | Calcium 17000 mg. + Phosphorus 8500 mg. + Vitamin D ₃ 800000 I.U. + Vitamin B ₁₂ 1000 mcg. | 1x12 btl. 2x6 btl. 5x3 btl. 10x1 btl | 093 |
| CALCIWEL FORT | | | |
| 87 | Calcium 35000 mg. + Phosphorus 17500 mg. + Vitamin D ₃ 150000 I.U. + Vitamin B ₁₂ 2000 mcg. + Carbohydrate 300000 mg. | 1x12 btl. 2x6 btl. 5x3 btl. 10x1 btl | 094 |
| WINT O TOUCH | | | |
| 88 | Aloe Barbadensis 5% w/w + Light Liquid Paraffin 2% w/w + Microcrystalline Wax 3% w/w + Petroleum Jelly 90% w/w | 12, 25, 50, 100 ml. | 095 |
| COUGHWEL (Ayurveda Syrup) | | | |
| 89 | Adulsa 250 mg. + Jestimadh 100 mg. + Tulsi 100 mg. + Ginger 150 mg. + Lemon Grass 34 mg. + Phudina Ka Phool 2 mg. | 100 ml. | 096 |
| PHARYSILS (Ayurveda Lozenges) | | | |
| 90 | Pudinah Ke Phool 4.80 mg. + Adrak ka Tel 1.08 mg. | 6 Lonzenges x 20 Blister | 097 |

Tablets & Capsule





COLATE

Each Uncoated tablet contains :

| | |
|-------------------------------|---------|
| Phenylephrine HCl I.P. | 5 mg. |
| Chlorpheniramine Maleate I.P. | 2 mg. |
| Paracetamol I.P. | 500 mg. |
| Excipients | Q.S. |

PACKING
30 x 10 Tablets



LEMOWEL

Each uncoated tablet contains :

- Cetirizine Hydrochloride I.P. 5 mg.
- Paracetamol I.P. 500 mg.
- Phenylephrine Hydrochloride I.P. 5 mg.



PACKING
30 x 10 Tablets



CETWEL

Each Film coated tablet contains :

Cetirizine Dihydrochloride I.P. 10 mg.

PACKING
35 x 3 x 10 Tablets



CETWEL-L

Each Film coated tablet contains :

Levocetirizine Dihydrochloride I.P. 5 mg.



PACKING
50 x 10 Tablets



CETWEL-LM

Each Film coated tablet contains :

| | |
|---|--------|
| Levocetirizine Dihydrochloride I.P. | 5 mg. |
| Montelukast Sodium I.P. Eq. to Montelukast | 10 mg. |

PACKING
20 x 1 x 10 Tablets



NEW SUPER 600

Each Uncoated tablet Contains :

| | |
|-------------------------------|---------|
| Paracetamol I.P. | 500 mg. |
| Phenylephrine Hcl I.P. | 5 mg. |
| Chlorpheniramine Maleate I.P. | 2 mg. |



PACKING
25 x 8 Tablets



COUGHWEL

Each Film Uncoated tablet contains :

| | |
|-------------------------------|---------|
| Terbutaline Sulphate I.P. | 2.5 mg. |
| Bromhexine Hydrochloride I.P. | 8 mg. |
| Guaiphenesin I.P. | 100 mg. |
| Excipients | Q.S. |

PACKING
30 x 10 Tablets



COUGHWEL-DX

Each Uncoated tablets contains :

| | |
|------------------------------------|--------|
| Dextromethorphan Hydrobromide I.P. | 10 mg. |
| Phenylephrine Hydrochloride I.P. | 5 mg. |
| Chlorpheniramine Maleate I.P. | 2 mg. |
| Excipients | Q.S. |



PACKING
50 x 10 Tablets



AMBROWEL

Each Uncoated tablet Contains :

| | |
|-----------------------------------|--------|
| Levocetirizine Hydrochloride I.P. | 5 mg. |
| Ambroxol Hydrochloride I.P. | 60 mg. |

PACKING
30 x 10 Tablets



WELPOL

Each uncoated tablet contains :

Paracetamol I.P.

500 mg.



PACKING
30 x 10 Tablets



WELPOL-650

Each Uncoated tablet contains :

| | |
|------------------|---------|
| Paracetamol I.P. | 650 mg. |
| Excipients | Q.S. |

PACKING
20 x 15 Tablets



WELACH

Each Uncoated tablet contains :

- Paracetamol I.P. 250 mg.
- Salicylamide U.S.P. 150 mg.
- Caffeine anhydrous I.P. 30 mg.
- Excipients Q.S.



PACKING
40 x 10 Tablets



WELNAC-P

Each Uncoated tablet contains :

| | |
|------------------------|---------|
| Diclofenac Sodium I.P. | 50 mg. |
| Paracetamol I.P. | 325 mg. |
| Excipients | Q.S. |

PACKING
50 x 10 Tablets



DICLOWEL-P[®]

Each Uncoated tablet contains :

| | |
|------------------------|---------|
| Diclofenac Sodium I.P. | 50 mg. |
| Paracetamol I.P. | 325 mg. |
| Excipients | Q.S. |



PACKING
30 x 10 Tablets

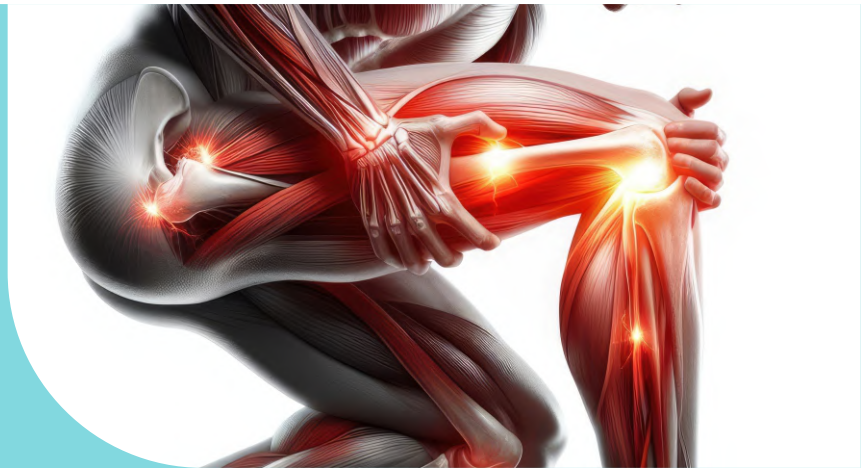


D P WEL

Each Uncoated tablet contains :

| | |
|------------------------|---------|
| Diclofenac Sodium I.P. | 50 mg. |
| Paracetamol I.P. | 325 mg. |
| Excipients | Q.S. |

PACKING
50 x 10 Tablets



DICLOWEL MR

Each Uncoated tablets contains :

| | |
|---------------------------|---------|
| Diclofenac Potassium B.P. | 50 mg. |
| Paracetamol I.P. | 325 mg. |
| Chlorzoxazone U.S.P. | 250 mg. |
| Excipients | Q.S. |



PACKING
30 x 10 Tablets



WELFLAM

Each Uncoated tablet contains :

| | |
|------------------|---------|
| Ibuprofen I.P. | 400 mg. |
| Paracetamol I.P. | 325 mg. |
| Excipients | Q.S. |

PACKING
30 x 10 Tablets



WELPROFEN

Each Uncoated tablet contains :

| | |
|------------------|---------|
| Paracetamol I.P. | 333 mg. |
| Ibuprofen I.P. | 400 mg. |
| Excipients | Q.S. |



PACKING
30 x 10 Tablets



NIMOWEL

Each Uncoated tablet contains :

| | |
|-----------------|---------|
| Nimesulide B.P. | 100 mg. |
| Excipients | Q.S. |

PACKING
20 x 10 Tablets



NIMOWEL-P

Each Uncoated tablet contains :

| | |
|------------------|---------|
| Nimesulide B.P. | 100 mg. |
| Paracetamol I.P. | 325 mg. |
| Excipients | Q.S. |



PACKING
30 x 10 Tablets



PARACE

Each Film coated tablet contains :

| | |
|------------------|---------|
| Aceclofenac I.P. | 100 mg. |
| Paracetamol I.P. | 325 mg. |
| Excipients | Q.S. |

PACKING
50 x 10 Tablets



PARACE-SP

Each Film coated tablet contains :

| | |
|------------------------|---------|
| Aceclofenac I.P. | 100 mg. |
| Paracetamol I.P. | 325 mg. |
| Serratiopeptidase I.P. | 10 mg. |
| Excipients | Q.S. |



PACKING
20 x 10 Tablets



WELSPAS

Each Uncoated tablet contains :

| | |
|----------------------|---------|
| Dicyclomine HCl I.P. | 20 mg. |
| Paracetamol I.P. | 500 mg. |
| Excipients | Q.S. |
| Color : Tartrazine | Q.S. |

PACKING
30 x 10 Tablets



SPASMEF

Each Uncoated tablet contains :

| | |
|--------------------------------|---------|
| Mefenamic Acid I.P. | 250 mg. |
| Dicyclomine Hydrochloride I.P. | 10 mg. |
| Color : Tartrazine | Q.S. |
| Excipients | Q.S. |



PACKING
30 x 10 Tablets



ULCIPAN

Each enteric Coated tablet contains :

Pantoprazole Sodium Sesquihydrate I.P.

Eq. to Pantoprazole

Excipients

40 mg.

Q.S.

PACKING
20 x 10 Tablets



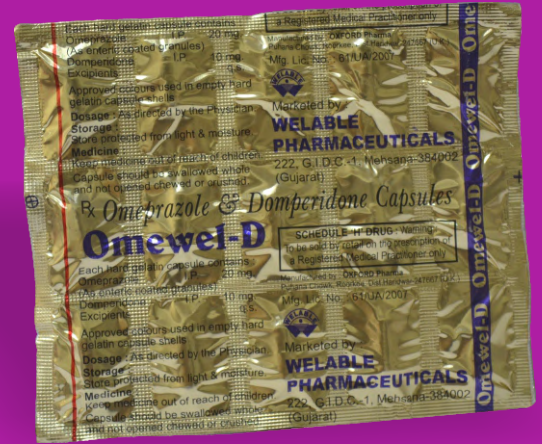
OME-P

Each Hard Gelatin Capsule contains :

| | |
|------------------------------|--------|
| Omeprazole I.P. | 20 mg. |
| (as enteric coated granules) | |
| Excipients | Q.S. |



PACKING
20 x 15 Capsules



OMEWEL-D

Each Hard Gelatin Capsule contains :

| | |
|---|--------|
| Omeprazole I.P. (As enteric coated granules) | 20 mg. |
| Domperidone I.P. | 10 mg. |
| Excipients | Q.S. |

PACKING
20 x 15 Capsules



RABEWEL-DSR

Each Hard Gelatin Capsule contains :

| | |
|--|--------|
| Rebeprazole Sodium I.P. (As enteric coated pellets) | 20 mg. |
| Domperidone I.P. (As sustained release pellets) | 30 mg. |
| Excipients | Q.S. |



PACKING
10 x 10 Capsules



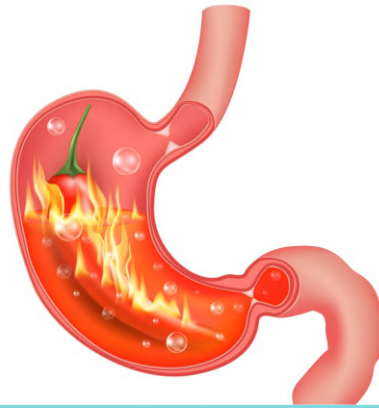
RANIWEL-150

Each Film Coated tablet contains :

Ranitidine Hydrochloride I.P.

Equivalent to Ranitidine 150 mg.

PACKING
30 x 10 Tablets



RANIWEL-300

Each Film Coated tablet contains :

| | |
|-------------------------------|---------|
| Ranitidine Hydrochloride I.P. | 336 mg. |
| equivalent to Ranitidine | 300 mg. |
| Excipients | Q.S. |



PACKING
30 x 10 Tablets



RANIWEL-D

Each Film Coated tablet contains :

| | |
|-------------------------------|---------|
| Ranitidine Hydrochloride I.P. | 150 mg. |
| equivalent to Ranitidine | |
| Domperidone I.P. | 10 mg. |
| Excipients | Q.S. |

PACKING
30 x 10 Tablets



FLUZOLE

Each Uncoated tablet contains :

Fluconazole I.P. 150 mg.
Excipients Q.S.



PACKING
1 x 1 Tablets



ITRAWEL-100

Each Hard Gelatin Capsule Contains :

| | |
|---|---------|
| Itraconazole Pellets eq. to Itraconazole BP | 100 mg. |
| Excipients | Q.S. |

PACKING
10 x 1 x 10 Capsules



SALBUWEL FORTE[®]

Each Uncoated tablet contains :

Salbutamol Sulphate I.P.

Equivalent to Salbutamol 4 mg.

Theophylline Anhydrous I.P. 200 mg.

Excipients Q.S.



PACKING
30 x 10 Tablets



WELMOX CV 625

Each Film Coated tablet contains :

| | |
|------------------------------|---------|
| Amoxicilline Trihydrate I.P. | |
| eq. to Amoxicilline | 500 mg. |
| Potassium Clavulanate | 125 mg. |
| Excipients | Q.S. |

PACKING
10 x 6 Tablets



WELMOX-D

Each Hard Gelatin Capsules Contains :

Amoxicilin Trihydrate I.P.

eq. to Amoxicilin 250 mg.

Cloxacillin Sodium I.P. 250 mg.

Excipients Q.S.



PACKING
20 x 10 Capsules



WELCEF-200

Each Uncoated Dispersible tablet contains :

| | |
|----------------------|---------|
| Cefixime I.P. eq. to | |
| Cefixime anhydrous | 200 mg. |
| Excipients | Q.S. |

PACKING
10 x 10 Tablets



WELCIPRO-500

Each Film Coated tablet contains :

Ciprofloxacin 500 mg.

(as Ciprofloxacin Hydrochloride I.P.)

Excipients Q.S.



PACKING
30 x 10 Tablets



WELFLOX 200

Each Film Coated tablet contains :

Ofloxacin U.S.P. 200 mg.

Color : Titanium Dioxide I.P.

PACKING
20 x 10 Tablets



WELFLOX-OZ

Each Film Coated tablet contains :

| | |
|-----------------|---------|
| Ofloxacin I.P. | 200 mg. |
| Ornidazole I.P. | 500 mg. |
| Excipients | Q.S. |



PACKING
30 x 10 Tablets



NORWEL TZ

Each Film Coated tablet contains :

- | | |
|------------------------------|------------------------------|
| Norfloxacin I.P. | 400 mg. |
| Tinidazole I.P. | 600 mg. |
| Lactic Acid | |
| Bacillus | 120 x 10 ⁶ Spores |
| (Appropriate Overages added) | |

PACKING
30 x 10 Tablets



LIVO-L

Each Film coated tablets contains :

| | |
|-------------------------------|---------|
| Levofloxacin Hemihydrate I.P. | |
| eq. to Levofloxacin | 500 mg. |
| Excipients | Q.S. |



PACKING
20 x 10 Tablets



Z-THRO-250

Each Film Coated tablet contains :

Azithromycin Dihydrate I.P.

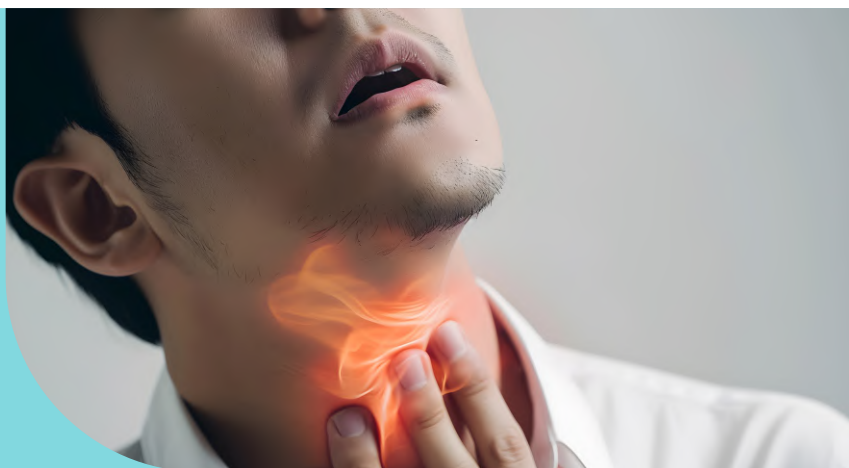
Eq. to Azithromycin Anhydrous

Excipients

250 mg.

Q.S.

PACKING
20 x 10 Tablets



Z-THRO-500

Each Film Coated tablet contains :

Azithromycin Dihydrate I.P.

Eq. to Azithromycin 500 mg.

Excipients Q.S.



PACKING
20 x 3 Tablets

SYRUPS & DROPS





COLATE LINCTUS

Each 5 ml. Contains :

| | |
|----------------------------------|----------|
| Paracetamol I.P. | 125 mg. |
| Chlorpheniramine Maleate I.P. | 1.25 mg. |
| Phenylephrine Hydrochloride I.P. | 2.5 mg. |
| Bromhexine Hydrochloride I.P. | 4 mg. |
| Menthol I.P. | 1 mg. |
| flavored Syrup base | |



PACKING
60 ml.



COLATE PLUS SUSPENSION

Each 5 ml. Contains :

| | |
|-------------------------------------|---------|
| Paracetamol I.P. | 250 mg. |
| Phenylephrine Hcl | 5 mg. |
| Cetirizine Dihydro Chloride I.P. | 2.5 mg. |
| Flavored Syrup base | |

PACKING
60 ml.



COLATE DROPS

Each ml. Contains :

| | |
|----------------------------------|---------|
| Paracetamol I.P. | 125 mg. |
| Phenylephrine Hydrochloride I.P. | 2.5 mg. |
| Chlorpheniramine Maleate I.P. | 1 mg. |
| Excipients | Q.S. |



PACKING
15 ml.

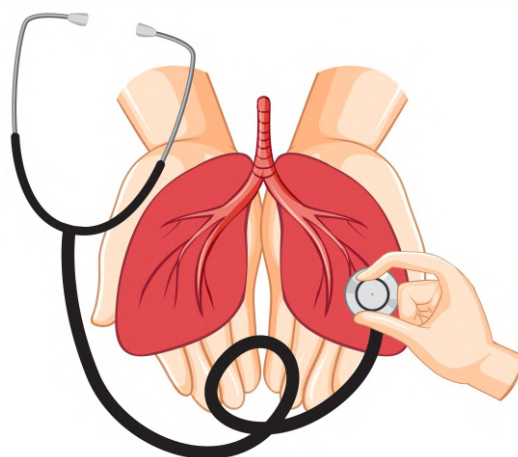


WELNEX DX

Each 5 ml. Contains :

| | |
|------------------------------------|--------|
| Dextromethorphan Hydrobromide I.P. | 10 mg. |
| Phenylephrine Hydrochloride I.P. | 5 mg. |
| Chlorpheniramine Maleate I.P. | 2 mg. |
| Flavored Syrup base | Q.S. |

PACKING
60 / 100 ml.



WELDRYL

COUGH SYRUP

Each 5 ml. Contains :

| | |
|------------------------------------|-----------|
| Diphenhydramine Hydrochloride I.P. | 14.08 mg. |
| Ammonium Chloride I.P. | 138 mg. |
| Sodium Citrate I.P. | 57.03 mg. |
| Menthol I.P. | 3 mg. |
| Flavored Syrup base | Q.S. |



PACKING
60 / 100 ml.



AMBROWEL

COUGH SYRUP

Each 5 ml. Contains :

Ambroxol Hydrochloride I.P. 30 mg.
Cetirizine Hydrochloride I.P. 2.5 mg.
in a flavoured syrup base

PACKING

60 / 100 ml.



AMBROWEL-LS

COUGH SYRUP

Each 5 ml. Contains :

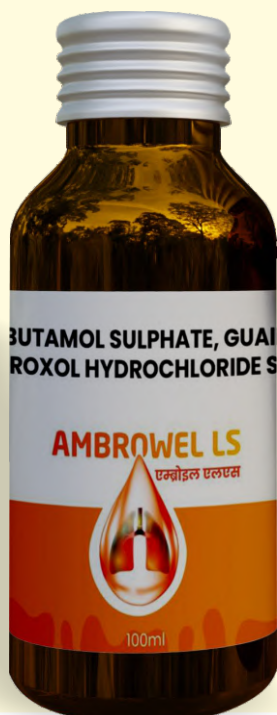
Levosalbutamol Sulphate I.P.

Eq. to Levosalbutamol 1 mg.

Guaiphenesin I.P. 50 mg.

Ambroxol Hydrochloride I.P. 30 mg.

Falvoured Syrup Base Q.S.



PACKING

100 ml.



COUGHWEL

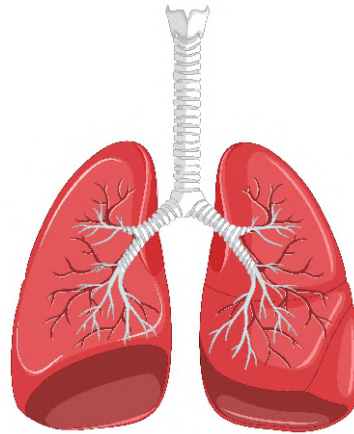
COUGH SYRUP

Each 5 ml. Contains :

| | |
|---------------------------|----------|
| Terbutaline Sulphate I.P. | 1.25 mg. |
| Bromhexine HCL I.P. | 2 mg. |
| Guaiphenesin I.P. | 50 mg. |
| Menthol I.P. | 0.5 mg. |
| Flavored Syrup base | Q.S. |

PACKING

60 / 100 ml.



HISTOWEL

Each 5 ml. Contains :

| | |
|-------------------------------|---------|
| Chlorpheniramine Maleate I.P. | 4 mg. |
| Ammonium Chloride I.P. | 120 mg. |
| Sodium Citrate I.P. | 50 mg. |
| Balsam of Tolu I.P. | 40 mg. |
| Menthol I.P. | 1 mg. |
| Flavored Syrup base | Q.S. |



PACKING
100 ml.



NIMOWEL-P

Each 5 ml. Contains :

| | |
|---------------------|---------|
| Acetaminophen I.P | 50 mg. |
| Paracetamol I.P. | 125 mg. |
| Flavored Syrup base | Q.S. |

PACKING

60 ml.



WELFLAM

SUSPENSION

Each 5 ml. Contains :

| | |
|---------------------|-----------|
| Paracetamol I.P. | 162.5 mg. |
| Ibuprofen I.P. | 100 mg. |
| Flavored Syrup base | Q.S. |



PACKING
60 ml.



WELPOL PLUS

Pediatric Suspension

Each 5 ml. Contains :

Paracetamol I.P. 250 mg.

Flavored Syrup base Q.S.

PACKING

60 ml.



WELCEF

DRY SYRUP

Each 5 ml. Contains :

Cefixime Anhydrous 50 mg.



PACKING
30 ml.



WELMOX-CV

DRY SYRUP

Each 5 ml. Reconstituted Suspension Contains :

Amoxycillin Trihydrate I.P.

eq. to Amoxycillin 200 mg.

Potassium Clavulanate I.P.

eq. to Clavulanic Acid 28.5 mg.

PACKING
30 ml.



HB WEL

Each 5 ml. Contains :

| | |
|---|---------------|
| Ferric Ammonium Citrate I.P. | 110 mg. |
| Folic Acid | I.P. 1.5 mg. |
| Cyanocobalamin | I.P. 15 mcg. |
| Sorbitol Solution (70%) (Noncrystallising) | I.P. 10 % w/v |
| Flavoured Syrup base | Q.S. |



PACKING
200 ml.

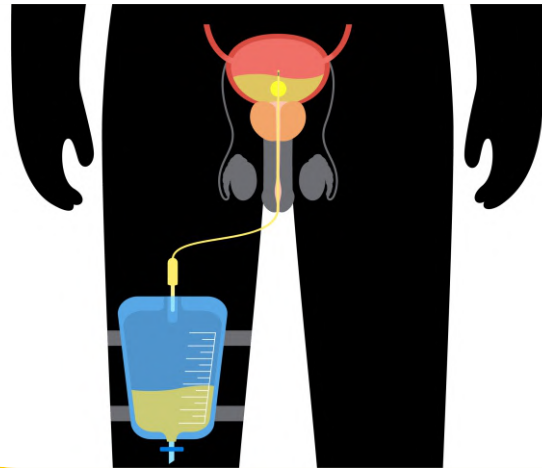


HEPTAWEL PLUS

Each 5 ml. Contains :

| | |
|-----------------------------------|---------|
| Cyproheptadine Hydrochloride I.P. | 2 mg. |
| Tricholine Citrate (65%) | 275 mg. |
| Sorbitol Solution (70%) I.P. | Q.S. |
| Flavoured Base | Q.S. |
| Color : Caramel | |

PACKING
200 ml.



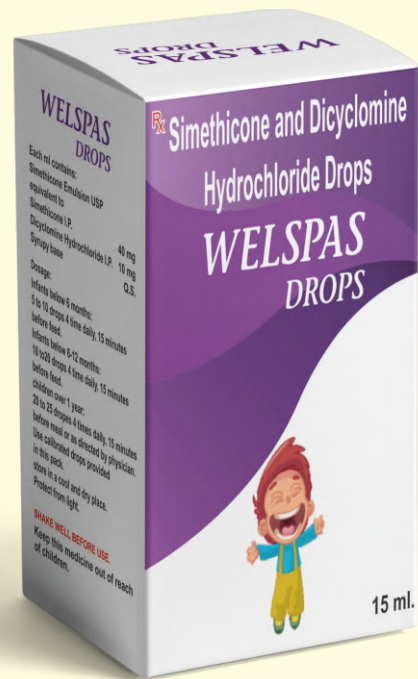
ALKAWEL SYRUP

Each 5 ml. Contains :

Di-Sodium Hydrogen Citrate B.P. 1.53 g.



PACKING
100 ml.



WELSPAS

DROPS

Each ml. Contains :

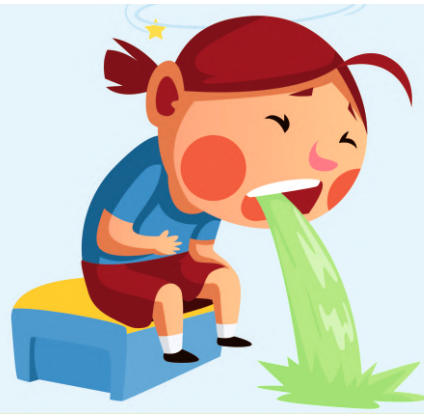
Simethicone Emulsion USP
equivalent to

Simethicone I.P. 40 mg.

Dicyclomine Hydrochloride I.P. 10 mg.

Syrupy base Q.S.

PACKING
15 ml.



ORWEL SYRUP

Each 5 ml. Contains :

Ondansetron hydrochloride I.P.

Eq. to Ondansetron 2 mg.

Flavoured Syrupy Base Q.S.

Color : Ponceau 4R



PACKING
30 ml.



WELCID GEL

Composition :

| | |
|------------------------------------|---------|
| Magnesium Hydroxide I.P. | 200 mg. |
| Dried Aluminium Hydroxide Gel I.P. | 200 mg. |
| Simethicone I.P. | 25 mg. |
| Flavored Syrup base | Q.S. |

PACKING
170 ml.



WELCORT EAR DROPS

Composition :

| | | |
|--|------|-----------|
| Gentamicin Sulphate I.P eq. to Gentamicin | | 0.3%w/v |
| Beclomethasone Dipropionate | I.P. | 0.025%w/v |
| Clotrimazole | I.P. | 1.0%w/v |
| Lignocaine Hydrochloride | I.P. | 2.0%w/v |
| Oily Base | | Q.S. |



PACKING
5 ml.

TUBE

OINTMENTS

CREAM



WELNAC-P *Gel*

Composition :

| | |
|------------------------------|------------|
| Diclofenac Diethylamine B.P. | 1.16% w/w |
| Eq. To Diclofenac Sodium | 1.00% w/w |
| Linseed Oil B.P. | 3.00% w/w |
| Methyl Salicylate I.P. | 10.00% w/w |
| Menthol | 5.00% w/w |
| Capsaicin U.S.P. | 0.025% w/w |
| Gel Base | Q.S. |



PACKING
30 g.



WELNAC-P *Spray*

Comosition :

| | |
|------------------------------|------------|
| Diclofenac Diethylamine I.P. | 1.16% w/w |
| Linseed Oil B.P. | 3.00% w/w |
| Methyl Salicylate I.P. | 10.00% w/w |
| Menthol I.P. | 5% w/w |
| Propellant Q.S. to | 100% w/w |

PACKING
55 ml.



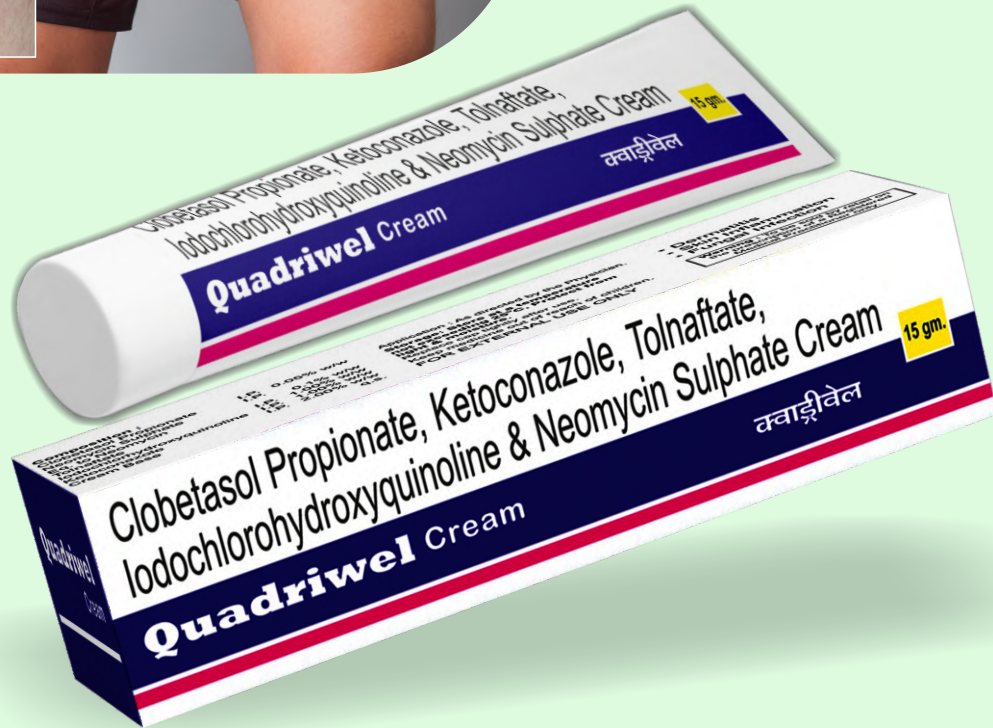
DICLOWEL *gel*

Composition :

| | |
|--|------------|
| Diclofenac Diethylamine B.P. | 1.16% w/w |
| Eq. to Diclofenac Sodium | 1.00% w/w |
| Linseed Oil B.P. | 3.00% w/w |
| Methyl Salicylate I.P. | 10.00% w/w |
| Menthol I.P. | 5.00% w/w |
| Benzyl Alcohol I.P. (As Preservative) | 1.00% w/w |
| Gel Base | Q.S. |



PACKING
30 g.



QUADRIWEL *Cream*

Composition :

| | |
|---------------------------------|-----------|
| Clobetasol Propionate I.P. | 0.05% w/w |
| Neomycin Sulphate I.P. | |
| Eq. to Neomycin | 0.1% w/w |
| Tolnaftate I.P. | 1.00% w/w |
| Iodochlorohydroxyquinoline I.P. | 1.00% w/w |
| Ketoconazole I.P. | 2.00% w/w |
| Cream Base | Q.S. |

PACKING

15 g.



CLOBEN GM Cream

Composition :

| | |
|----------------------------|-----------|
| Clobetasol Propionate I.P. | 0.05% w/w |
| Clotrimazole I.P. | 1.00% w/w |
| Neomycin Sulphate I.P. | |
| Eq. to Neomycin Base | 0.50% w/w |
| Chlorocresol I.P. | 0.10% w/w |
| (As Preservative) | |
| Cream Base | Q.S. |



PACKING
10 g.



WELFLOX-OZ *Cream*

Composition :

| | |
|---------------------------------------|------------|
| Ofloxacin I.P. | 0.75% w/w |
| Ornidazole I.P. | 2.00% w/w |
| Terbinafine Hydrochloride I.P. | |
| Eq. to Terbinafine | 1.00% w/w |
| Beclomethasone Dipropionate I.P. | 0.025% w/w |
| Methyl Paraben (As Preservative) I.P. | 0.20% w/w |
| Propyl Paraben (As Preservative) I.P. | 0.02% w/w |
| In a non greasy base | Q.S. |

PACKING
15 g.



PD WEL Ointment

Composition :

| | |
|-----------------------------|-------------|
| Povidone Iodine I.P. | 10.00 % w/w |
| Available Iodine | 1.00 % w/w |
| Water soluble ointment base | q.s. |



PACKING
15 g.



ULCIWEL *Gel*

Composition :

| | |
|--|-----------|
| Choline Salicylate Solution B.P. equivalent to Choline Salicylate | 8.7% w/w |
| Lignocaine Hydrochloride I.P. | 2.0% w/w |
| Preservative : | |
| Benzalkonium Chloride Solution I.P. | 0.01% w/w |
| in pleasant flavoured base | Q.S. |

PACKING
10 g.



SCABNIL

LOTION

Composition :

Gamma Benzene Hexachloride I.P. 1% w/v
Cetrimide I.P. 0.1% w/v



PACKING
100 ml.



KETO SCAL

SHAMPOO

Composition :

| | |
|-------------------|-------------|
| Ketoconazole I.P. | 2.0% w/w |
| Colour | Erythrosine |
| Solvent | Aqueous |
| Base | Q.S. |

PACKING
100 ml.



Soda-G[®]
Lemon

Soda-G[®]
Regular

Each 5 gm. Contains :

Svarjiksara (Shudh) 2.91 g.
Nimbukamlam (Shushkam) 2.04 mg.

Svarjiksara (Shudh) 2.94 g.
Nimbukamlam (Shushkam) 2.06 g.

PACKING
5g x 6 Sachets



Soda-G[®]

**JEERA
Masala**

Each 5 gm. Contains :

| | |
|------------------------------|-----------|
| Svarjiksara (Sudh) | 48.1% w/w |
| Nimbukamlam (Shushkam) | 32.8% w/w |
| Samudralavan | 7% w/w |
| Jeera (Cuminum Cyminum) | 3% w/w |
| Adrak (Zingiber officinale) | 0.02% w/w |
| Kali Mirch (Piper niagrurn) | 0.6% w/w |
| Dhaniya (Coriandrum Sativum) | 0.45% w/w |
| Saurvachal (Black Salt) | 8.0% w/w |
| Asafoetide (Ferulla nathex) | 0.03% w/w |



PACKING
6 Sachet x 7 gm.



Soda-G[®]

गैस और ऐसीडीटी से तुरंत राहत

Each 5 gm Contains (Lemon) ;

| | |
|------------------------|---------|
| Svarjiksara (Shudh) | 2.91 g. |
| Nimbukamlam (Shushkam) | 2.04 g. |

Each 5 gm Contains (Regular) :

| | |
|------------------------|---------|
| Svarjiksara (Shudh) | 2.94 g. |
| Nimbukamlam (Shushkam) | 2.06 g. |

PACKING

100 + 30 mg.



Super One

Advance

Each uncoated tablet Contains :

| | |
|------------------------------------|---------|
| Paracetamol I.P. | 500 mg. |
| Diphenhydramine Hydrochloride I.P. | 25 mg. |
| Phenylephrine Hydrochloride I.P. | 5 mg. |
| Caffeine Anhydrous I.P. | 30 mg. |
| Excipients | Q.S. |



PACKING
30 x 10 Tab.



Painstop[®]

For fast relief from Headache

Each Uncoted Tablet Contains :

| | |
|-------------------------|---------|
| Paracetamol I.P. | 500 mg. |
| Caffeine Anhydrous I.P. | 50 mg. |
| Excipients | Q.S. |

PACKING
20 x 10 Tab.
40 x 10 Tab.



Painstop[®]

Pain Relieving Ointment

Contains :

| | |
|--------------------|------------|
| Oil of Wintergreen | 20.00% w/w |
| Pudina Ka Phool | 10.00% w/w |
| Tarpin Ke Tel | 03.00% w/w |
| Nilgiri Tel | 02.00% w/w |
| Base | Q.S. |



PACKING
25 gm.



Ayurvedic

Composition :

| | |
|-------------------------------|-----------|
| Mentha ssp-satva | 12.5% w/w |
| Gaultheria fragrantissima Oil | 15% w/w |
| Tarpin Oil | 3.0% w/w |
| Nilgiri Tel | 2.0% w/w |
| Karpoor | 3.0% w/w |
| Ajowan Ka Phool | 1.0% w/w |
| Base | Q.S. |

PACKING
10 ml.



WELABLE® Cough Drops

Each 3 g. Drop Contains :

| | |
|-----------------------------|----------|
| Kapoor | 0.17 mg. |
| Pudina Ke Phool | 7.12 mg. |
| Nilgiri Tel | 1.76 mg. |
| Ajowan Ke Phool | 0.22 mg. |
| Flavored Sugar base Q.S. to | 3 g. |



PACKING
3g x 270 / 190 drops



NEW

Roll on + Inhaler

✓ Clear Stuffy Nose ✓ Headache

Contains Inhaler :

| | |
|---|------------|
| Phudina ka Phool (Mentha sylvestris, Crystal) | 42.00% w/w |
| Karpoor (Camphora officinarium, Crystal) | 41.00% w/w |
| Gultheria Oil (Gaultheria farmentasia, Oil) | 12.5% w/w |
| Nilgiri Oil (Eucalyptus globulus, Oil) | 3.00%w/w |
| Jayphal Oil (Myristica Fragrans, Oil) | 1.00%w/w |
| Base (Light Liquid Paraffin I.P.) | Q.S. |

Contains Roll On Oil :

| | |
|---|-----------------|
| Phudina ka Phool (Mentha sylvestris, Crystal) | 15.00% w/w A.B. |
| Karpoor (Camphora officinarium, Crystal) | 15.00% w/w A.B. |
| Gultheria Oil (Gaultheria farmentasia, Oil) | 29.5% w/w Bh.P. |
| Nilgiri Oil (Eucalyptus globulus, Oil) | 4.50%w/w Bh.P. |
| Base (Light Liquid Paraffin I.P.) | Q.S. |

PACKING
1 x 12 Blister
1 x 50 Cont.



Each 05 ml. Contains :

| | |
|---|-----------------|
| Phudina ka phool (Mentha Sylvestris, Crystal) | 42.00% w/w A.B. |
| Karpoor (Camphora officinarium, Crystal) | 41.00% w/w A.B. |
| Gultheria Oil (Gaultheria farmentasia, Oil) | 12.5% w/w Bh.P. |
| Nilgiri Oil (Eucalyptus globulus, Oil) | 3.00% w/w Bh.P. |
| Jayphal Oil (Myristica Fragrans, Oil) | 1.00% w/w A.B. |
| Base (Light Liquid Paraffin I.P.) | Q.S. |



PACKING
1 x 6 Blister
1 x 50 Cont.



Nutritional Value per 1000 ml. Contains :

| | |
|-------------------------|-------------|
| Calcium | 17000 mg. |
| Phosphorus | 8500 mg. |
| Vitamin D ₃ | 800000 I.U. |
| Vitamin B ₁₂ | 1000 mcg. |

PACKING

1 Ltr x 12 Btl. 5 Ltr x 3 Btl.
 2 Ltr x 6 Btl. 10 Ltr x 1 Btl.



केलिवेल® Forte



Nutritional Value per 1000 ml. Contains :

| | |
|-------------------------|-------------|
| Calcium | 35000 mg. |
| Phosphorus | 17500 mg. |
| Vitamin D ₃ | 150000 I.U. |
| Vitamin B ₁₂ | 2000 mcg. |
| Carbohydrate | 300000 mg. |



PACKING

1 Ltr x 12 Btl. 5 Ltr x 3 Btl.
2 Ltr x 6 Btl. 10 Ltr x 1 Btl.



Wint O Touch

Each 5 gm Contains :

| | |
|-----------------------|---------|
| Aloe Barbadensis | 5% w/w |
| Light Liquid Paraffin | 2% w/w |
| Microcrystalline Wax | 3% w/w |
| Petroleum Jelly | 90% w/w |

PACKING
12 / 25 / 50 / 100 ml.



Coughwel

Ayurveda Syrup

Each 5 gm. Contains :

| | |
|----------------------|---------|
| Extract of Adulsa | 250 mg. |
| Extract of Jestimadh | 100 mg. |
| Extract of Tulsi | 100 mg. |
| Extract of Ginger | 150 mg. |
| Lemon Grass | 34 mg. |
| Phudina ka Phool | 2 mg. |



PACKING
100 ml.



Effective relief for sore throats

Pharysils[®]

Ayurvedic 
Lozenges

Each Lozenges Contains :

| | |
|------------------------------|----------|
| Pudinah ke Phool | 4.80 mg. |
| Adrak ka Tel | 1.08 mg. |
| Flavoured Sugar Base Q.S. to | 2.7 g. |

PACKING
6 Lozenges x 20 Blister



पाचक राजा

डाईजेस्टिव कैंडी

तीन नए
फ्लेवर्स



Aam



Dadam



Imli



स्वाद का महाराजा

Pachak Raja

Digestive Candy



PACKING
200 Drop x 1 Jar



ETHANOL SOLUTION **STERITOUCH** LIQUID

Composition :-

| | |
|--------------------------|---------|
| Ethanol (Denatured) I.P. | 70% v/v |
| Purified Water | Q.S. |
| Excipients | Q.S. |

PACKING

*100 ml. x 120 Bottle
250 ml. x 63 Bottle
500 ml. x 30 Bottle
5 Ltr. x 3 Can*



Kn95 Protective Mask Disposable Face Mask

*With Earloop & Adjustable Nose Piece
Pack of 5 Pieces*

Mask Color :

- White, Black
- Gray
- Pink
- Light Brown



PACKING
3 Layers x 100 Pics.
N95 Mask 50 Pics.